

Chat Service

In addition to mail, chat service is also available, which allows email users to chat within domain and/or between domains using their email-id as chat-id. A Chat client (Exodus or Pidgin) has to be installed on the client. Download chat client <http://hqr.drdo.in/>

Run the exe file and accept all default settings for installation. Once installed, the client has to be configured with the account information of the chat user, which is the same as drdo.in email account information.

Steps to configure a Chat account for Exodus:

1. Click on **Profile**, and select Create new Profile.
2. Enter your **drdo.in** username.



Fig 1.

3. Click on **Details**, a new Popup window opens as shown in Fig 2.
4. The above username and your domain make up your Chat ID (Jabber ID), which is the same as your drdo.in email address, i.e. **username@<labname>.drdo.in**. To send an instant message or chat with another user, you would require this ID.

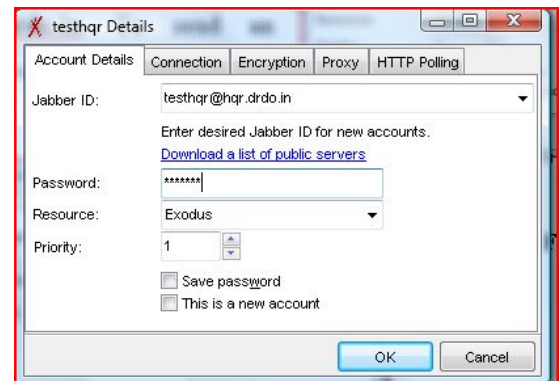


Fig 2.

5. In the **Password** box, enter your email password. If you want Exodus to remember your password, check the **Save password** checkbox.
6. Next, click on the **Connection** tab Fig 3.
7. On the Connection tab, remove the check from **Automatically discover host and port**.
8. In the **Host** box, enter **<labname>.drdo.in**.
9. The **Port** should have **5222** entered.
10. Click on **OK** to save the settings.

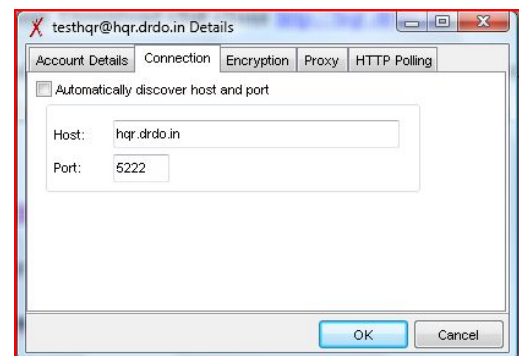


Fig 3

Additional Configuration Options

If automatic sign in is required when Exodus starts, Select **Tools** then **Options** from the Exodus Window **Fig 4**.

On selecting **Options**, Pop Window as in **Fig 5** is displayed.

Following options should be checked in the **System** section:

- ❖ **Automatically login with last profile**
- ❖ **Run Exodus when windows starts**
- ❖ **Close button minimizes to the tray.**

Optionally, you can enable the option to **Start minimized to the system tray**. Exodus will still start and log you in, but will stay out of the way until someone sends you a message or you want to use it.



Fig 4

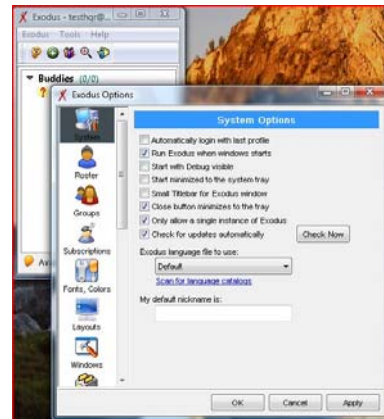


Fig 5

Adding Contacts, Starting Chat and Conferences:

- To add a contact into your roster
 - Click on the **Tools** menu,
 - Select **Contacts** and then select **Add Contact**.

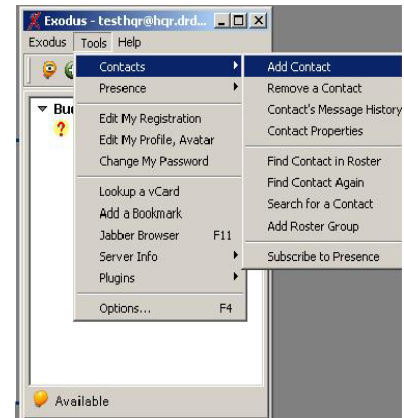


Fig. 6

- Enter the **Chat ID** of the person you wish to add to your list of contacts **Fig 7**.

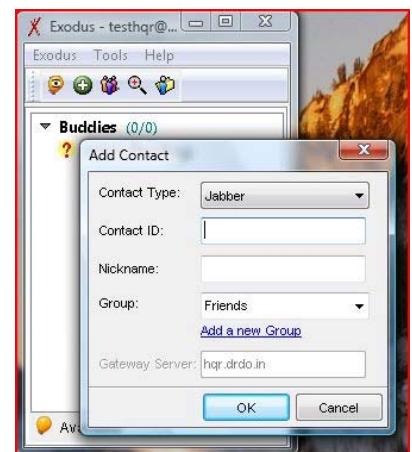


Fig 7

Note: Clients should be configured for the contacts being added so that approval can be provided for the request before allowing to add a contact into your roster. Most clients are configured to automatically add anyone who adds them to their roster, which means that you are likely to get a request to allow your chat ID to be added to the other persons' roster.

- Chat can be started with anyone in your roster by double clicking on an entry in the roster.
- Chat can be started with person not in your roster, by selecting the **Exodus** menu, and **Start Chat** option. You will be prompted to enter the Chat ID of the person you would like to start chat with. But it is generally a good practice to add the people you want to chat with into your roster before starting chat with them.
- To start a group chat, also known as a multi-user conference, or MUC where multiple people participate in a single conversation, select the **Exodus** menu, and select **Join a Chat Room (Fig 8)**.
 - For the **Room Server** enter, **conference.<labname>.drdo.in**.
 - For the room name, you can enter letters, numbers, or the underscore or dash symbols. If the room does not exist already, it will be created for you automatically.
 - If you wish to password protect the room in order to make it private, enter a password in the **Password** box. If no password is specified, anyone in the Jabber network will be able to join your chat room. Alternately you may leave the password blank and you will be asked to specify additional chat room configurations, which will allow you to make the chat room available only to those you invite.

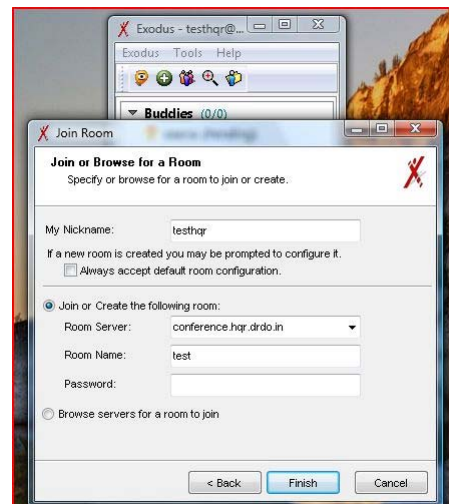


Fig 8

Note: The password used for a chat room **should not** be the same as your drdo.in email password. This password is used to secure the chat room only. It should be an easy to remember password that will be known by the people you wish to invite to the conference. You can invite people into the chat room by right clicking on their roster entry and selecting **Invite to Conference**. This is a quick and easy way to gather two or more people to a chat room.